

THE BUREAU



Glossop
Health
Team

Improving care in our community

01457 865722

@info@the-bureau.org.uk



Health & Wellbeing Newsletter

February '23



COVID-19
Positive Tests

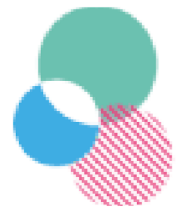
19

Up 16 (+ 533.3%)

Last 7 Days

Vaccine
Clinic

Simmondley
Medical
Centre



National Academy
for Social Prescribing



Social
Prescribing
Week 4-11
MARCH '22

GET CONNECTED

The Social Prescribing network is nationwide. Find out what groups are in your area

FIND SUPPORT

The network can offer new ideas, support and education to help in your SP journey.

PROMOTE HEALTH

Connecting SP providers helps relieve our NHS and provide health opportunities.



Social prescribing creates healthier, happier, and better-connected communities.



If you work in a local voluntary or community organisation, you can join the Thriving Communities regional networks.



Visit socialprescribingacademy.org.uk to join the network, join NASP events, and find out more.

Get Connected
Find Out More With NASP!



**Glossop
Health
Team**

Improving care in our community

Glossop Health Team Vaccines have Moved

Glossop Health Team will no longer be performing Covid-19 vaccines from opposite the Glossop North End AFC football grounds.

At their next clinic on the 26th January, they will be located at:

SIMMONDLEY MEDICAL PRACTICE

For more information, please call us on **01457 865722**

Cervical screening

Let's take a moment to talk about cervical cancer awareness.

The main cause of cervical cancer is a virus called human papillomavirus (HPV). There are over 200 types of HPV but only about 13 are linked to causing cervical cancer and are known as high risk HPV.

Regular cervical screenings (formerly known as Smears) can help detect and prevent cervical cancer, so make sure to book your appointment with your GP. Let's spread awareness and take care of ourselves and our bodies.

CERVICAL SCREENING ATTENDANCE NATIONAL FINDINGS

About **3 MILLION WOMEN** in England have **not** had a smear test for

3.5 YEARS



1 in 3 WOMEN aged 25-29 skip cervical screening



EMBARRASSMENT about body shape is a barrier to attendance for between **a third and a half of women**



61%

of women aged 25-29 were unaware they were in the **HIGHEST-RISK GROUP CERVICAL CANCER**



Bereavement Support Groups

Grieving is personal and individual, the circumstances around and leading to the death are different, and your reactions to it will be yours. But there are also some feelings we may well have in common with others. They bravely shared and then managed to support each other and continue to do so. They have all felt the benefit of talking and sharing in a safe supported place with the reassurance that everybody there will understand and all are there for the same reasons.

For more details, please contact Liz Fletcher on 01663 735350 – Option 3 or email: bereavement@highpeakcvs.org.uk

NHS
breast
screening
could save
your life.

Don't miss your opportunity.

Accept your invitation.



NHS



GLOSSOPDALE

SOUP

A COMMUNITY FUNDRAISING EVENT
SEE LOCAL PROJECTS PITCH FOR YOUR VOTE - CHOOSE CHANGE IN YOUR COMMUNITY!

WHAT'S YOUR IDEA?

WE NEED PITCHES!